

# AFTERIMAGE

Published by David Benvenuti, M.D.

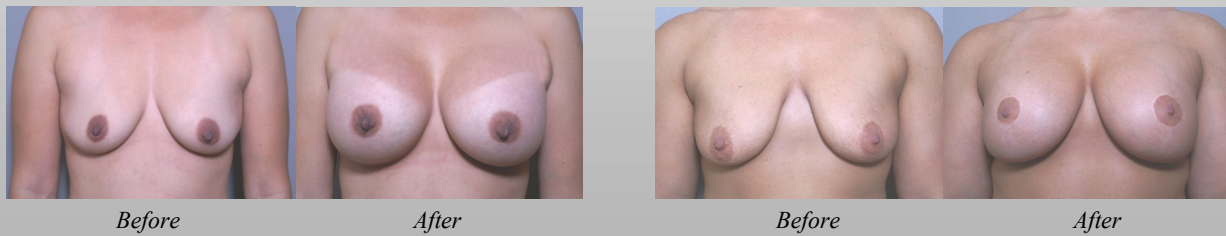
Volume 8, Issue 1

## BREAST SURGERY LIFT OPTIONS

### INTRODUCTION

Breast Augmentation is as popular today as ever before. The American Society of Aesthetic Plastic Surgeons (ASAPS) reported that 286,694 augmentations were performed nationally last year. It is estimated that over 6 million women in the United States have implants, both saline and silicone. When breasts appear deflated or droopy, the placement of implants, in many cases, can achieve a more youthful looking breast.

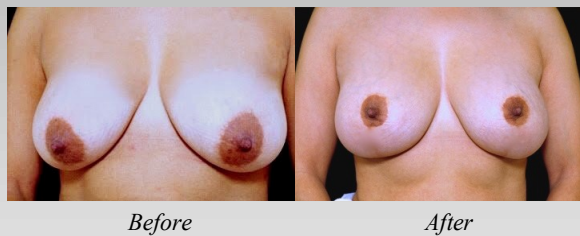
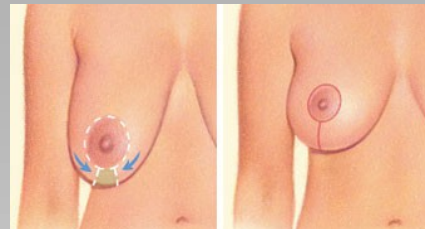
### Breast Implants Only



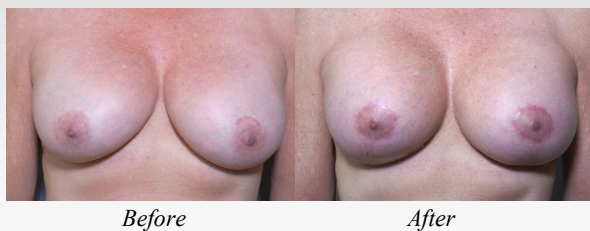
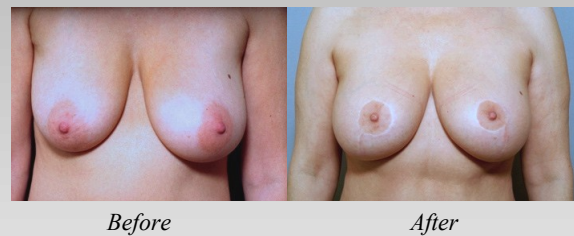
As time passes, the weight of the implants, gravity, weight fluctuations, age, and loss of skin elasticity all contribute to women feeling less satisfied with their breasts. As a result, many women elect to exchange their original implants with smaller implants. This, however, leaves excess skin requiring some sort of a lift.

### Mastopexy

The type of lift required is determined by the amount of excess skin, position of the nipples, and overall desired result. Most dramatic is the Mastopexy or full breast lift. This surgery involves a keyhole type incision with removal of skin and repositioning of the nipples and areolas.



**Mastopexy Without Implants**

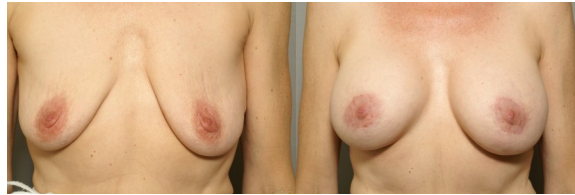
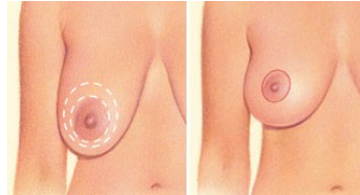


**Mastopexy With Implants**



### Donut Mastopexy

Frequently just a Donut Mastopexy is needed. Skin is removed from around the entire areola in the shape of a donut.



*Before*

*After*



*Before*

*After*



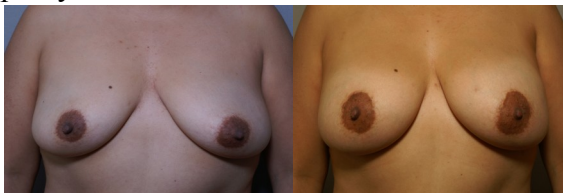
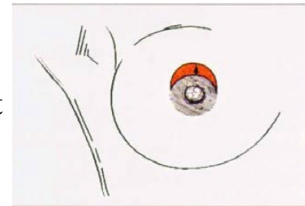
*Before*

*After*

**Donut Mastopexy With Implants**

### Nipple Lift

The easiest, least invasive, and least expensive lift is a nipple lift. A crescent of skin is removed from above the areola. The incision is closed raising or repositioning the nipple. If the procedure is not being done at the same time as a breast augmentation then it may be performed under local anesthesia, yielding a more youthful, perky breast.



*Before*

*After*



*Before*

*After*

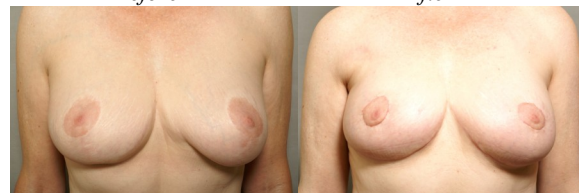
### Breast Wedges

If too much skin is under the breast at the fold then horizontal breast wedges can be performed. It can be done in combination with either a donut mastopexy or nipple lifts to slightly raise the breasts.



*Before*

*After*



*Before*

*After*

**Breast Wedges With Donut Mastopexy**